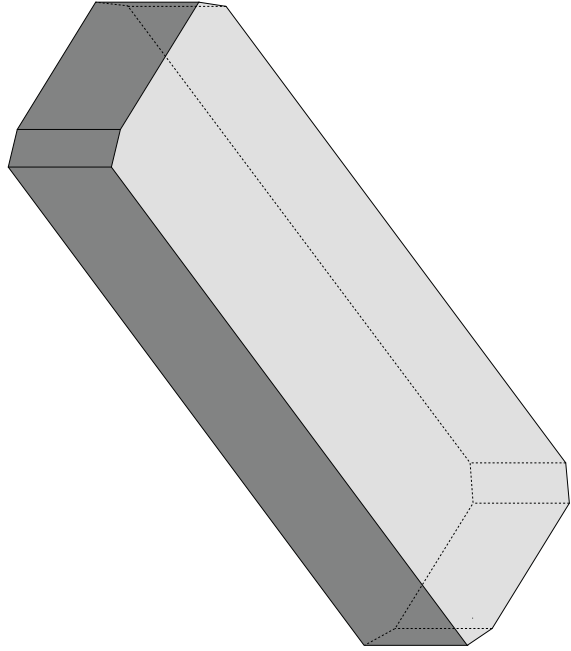


# Pasul 1 - vopsit pereti











Material and color:  
Perete vopsit gri inchis RAL 7016

# Pasul 2 - Amplasat lumini

**PerfectBeam**  
**Variable Spot**  
Interchangeable lenses for beam shaping

Inspired by projection optics like camera lenses, this luminaire zoom mechanism and a number of beam angles are easy to adjust.

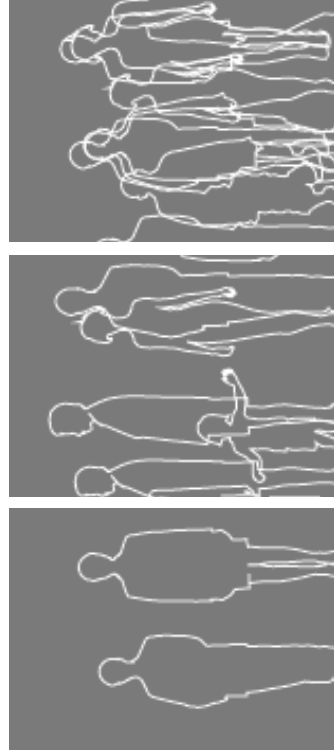
	<b>Small beam</b>		<b>Medium beam</b>		<b>Wide beam</b>
	7 degrees		11 degrees		43 degrees
	<b>Soft frontal lens (S-F)</b>		<b>Linear frontal lens (L-OH40)</b>		



**PHILIPS STYLID PERFECTBEAM**  
For all the lighting on level 1  
PerfectBeam Variable spot  
(For lighting up the exhibition items)



Referinta / Reference: Romana Ondáka  
Measuring The Universe, MoMA



26 mai 2018

26 Iulie 2018

25 Noiembrie 2018